

# GEOLOGICAL MAP OF AUSTRIA

Edited by the Geological Survey of Austria, Vienna 1999

Compiled by H. EGGER, H.G. KRENMAYR, G.W. MANDL, A. MATURA, A. NOWOTNY, G. PASCHER †, G. PESTAL, J. PISTOTNIK, M. ROCKENSCHAUB and W. SCHNABEL.

## BOHEMIAN MASSIF

- Granulite, Gföhl Gneiss
- Granite
- Orthogneiss, migmatite
- Paragneiss, micaschist, marble, amphibolite

## TERTIARY BASINS

- Volcanite (Miocene, Pliocene)
- Clastic sediments (gravel, sand, clay) of the Molasse Zone and the intramontaneous basins
- Subalpine (deformed) Molasse Zone

## HELVETIC UNIT

- Mesozoic to Early Tertiary sedimentary rocks

## PENNINIC UNIT

- Flysch Zone (Cretaceous - Early Tertiary) inclusive Penninic Klippen
- Bündnerschiefer Group (Jurassic - Early Tertiary) with ophiolites
- Permo-Triassic metasedimentary rocks
- Central Gneiss
- Altkristallin Complex and metamorphic Paleozoic sedimentary rocks

## AUSTROALPINE UNIT

Mesozoic of the Northern Calcareous Alps and equivalents

- Gosau Group
- Limestone, dolomite, marl and clastic sedimentary rocks

## Paleozoic

- Sedimentary rocks and volcanics, partly metamorphic

## Permo-Mesozoic, metamorphic

- Clastic/carbonatic sedimentary rocks

## Austroalpine Crystalline Complexes

- Orthogneiss
- Paragneiss, micaschist
- Amphibolite
- Quartzphyllite, micaschist, paragneiss

## PERIADRIATIC INTRUSIONS

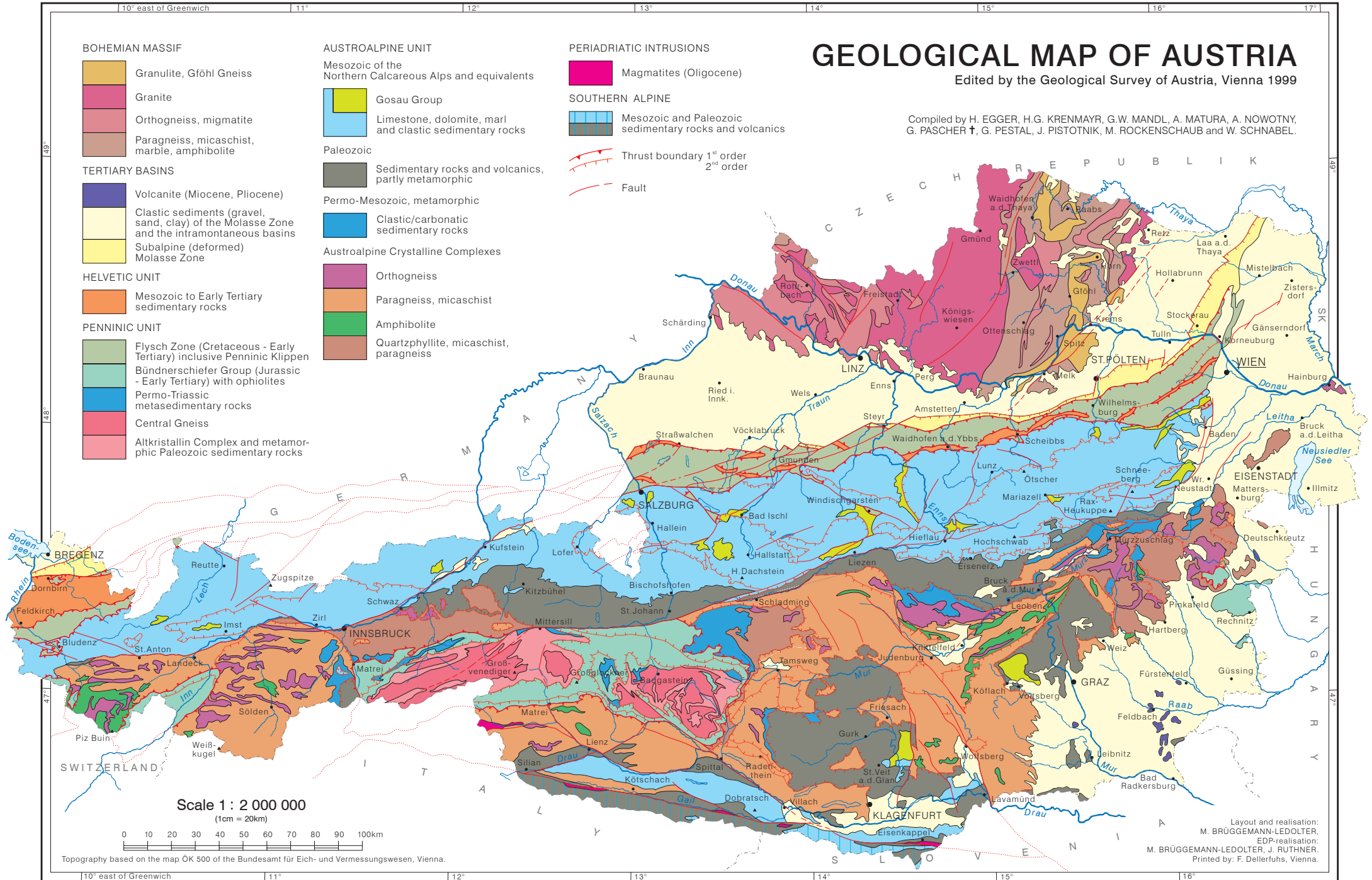
- Magmatites (Oligocene)

## SOUTHERN ALPINE

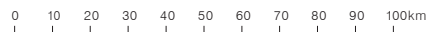
- Mesozoic and Paleozoic sedimentary rocks and volcanics

- Thrust boundary 1<sup>st</sup> order
- 2<sup>nd</sup> order

- Fault



Scale 1 : 2 000 000  
(1cm = 20km)



Topography based on the map OK 500 of the Bundesamt für Eich- und Vermessungswesen, Vienna.

Layout and realisation:  
M. BRÜGGEMANN-LEDOLTER,  
EDP-realisation:  
M. BRÜGGEMANN-LEDOLTER, J. RUTHNER,  
Printed by: F. Dellerfuhs, Vienna.