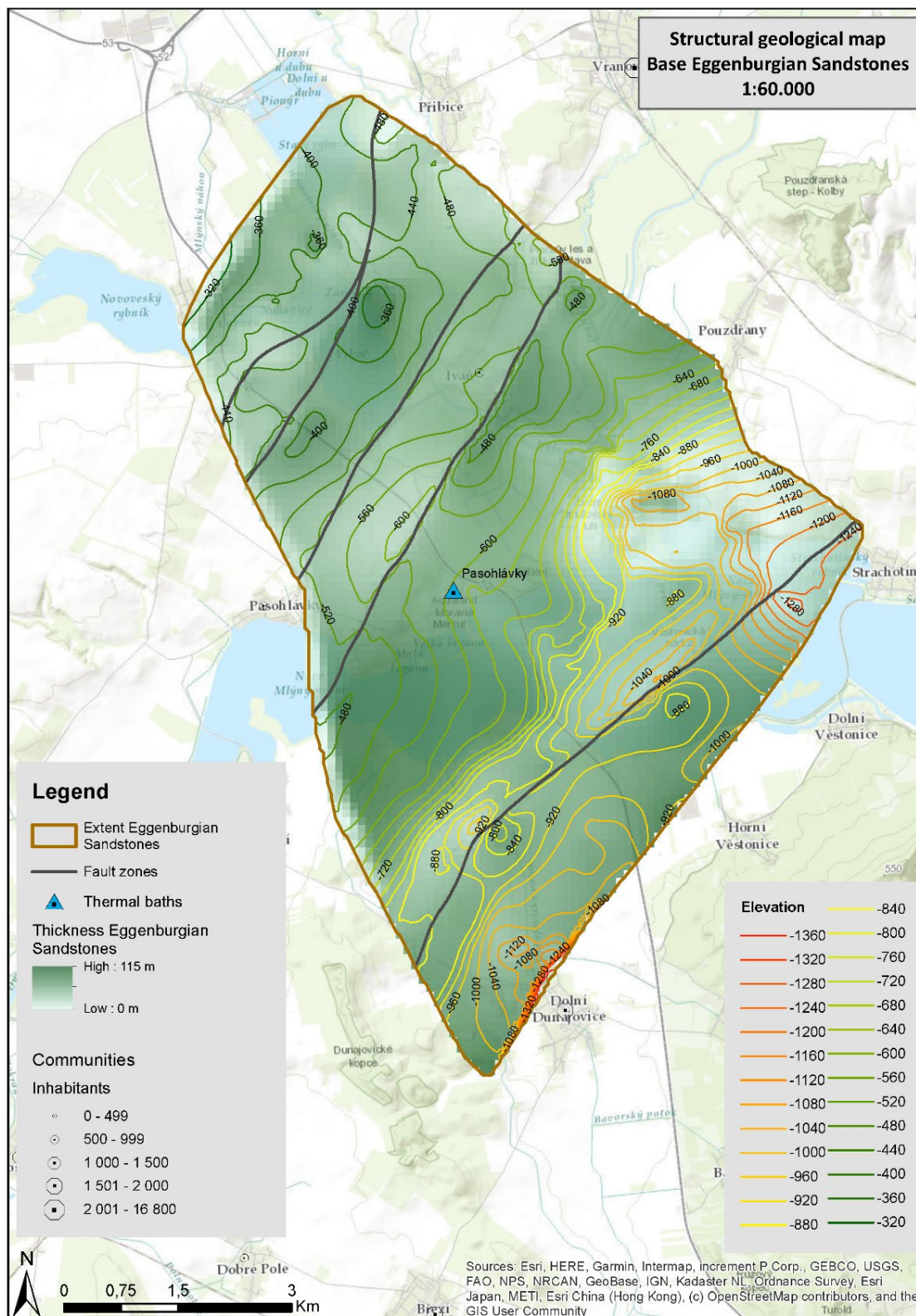


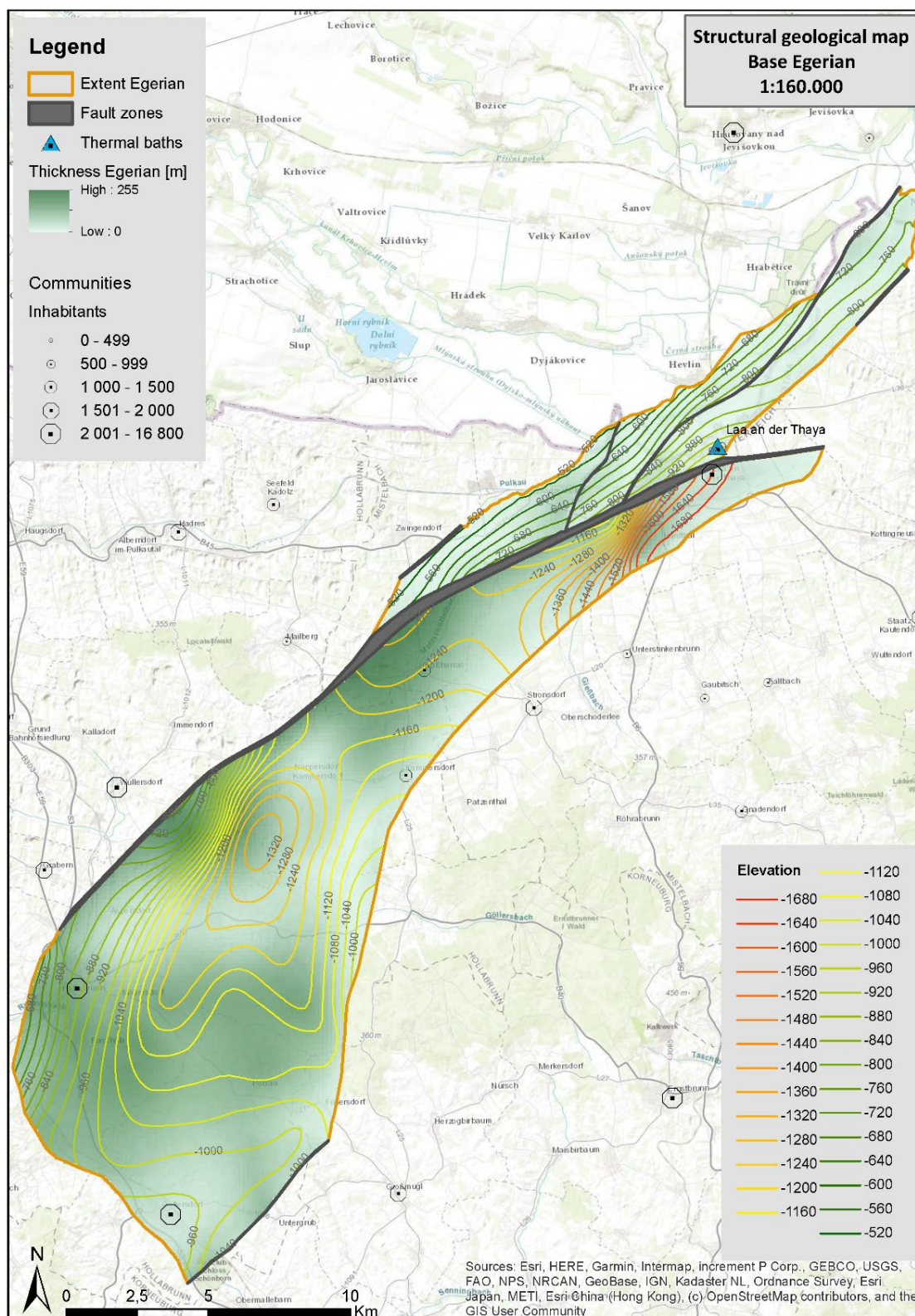
Map of the thickness and structure of the main thermal water bearing geological formation, the base „Aquifer“ – the base of the Altenmarkt and Vranovice Formation in the scale of 1:190.000. Structural data is exported from the geological 3D model (main output T1.1).





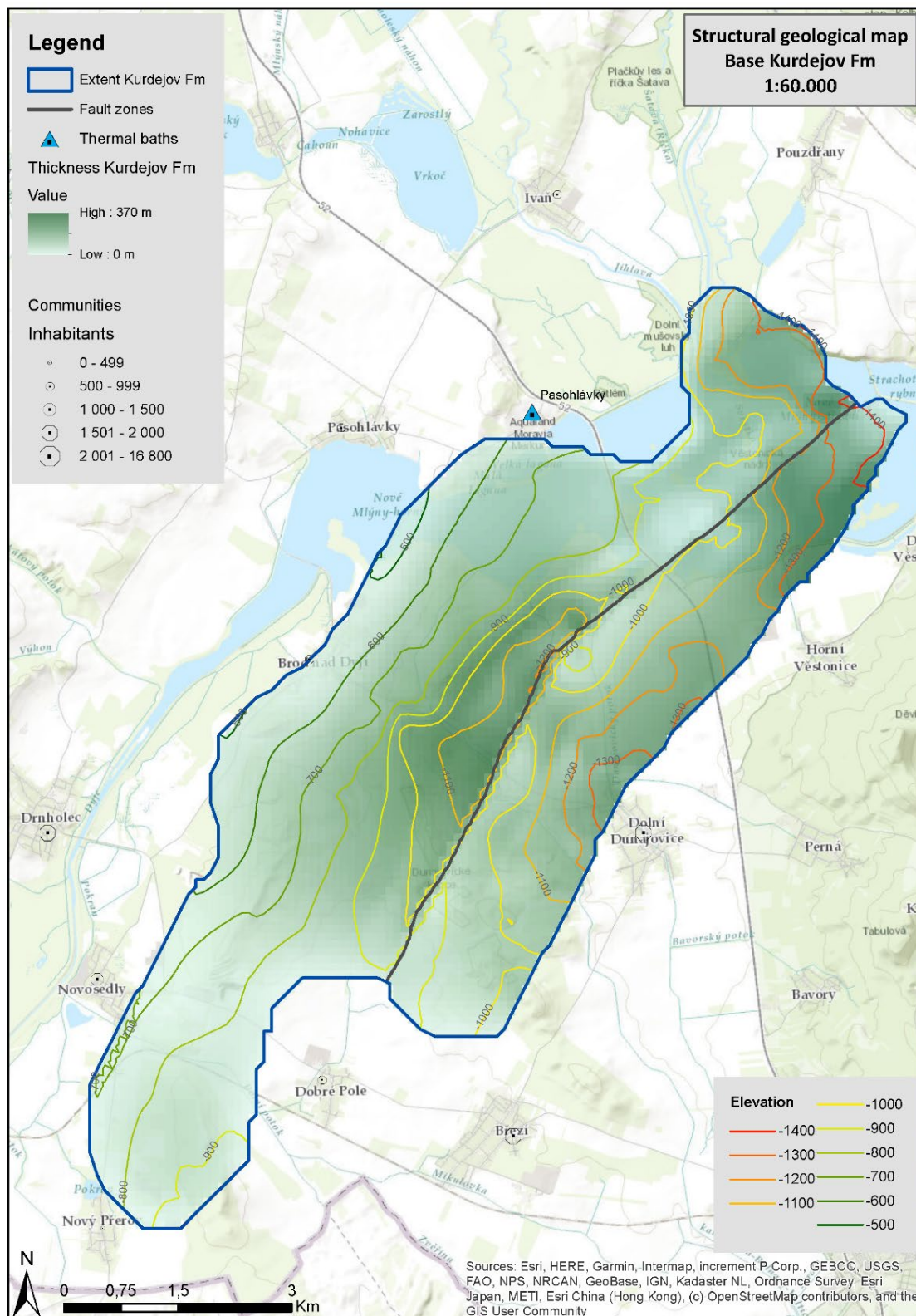
Map of the thickness and structure of the base Eggenburgian Sandstones in the Czech Republic in the scale of 1:60.000. Structural data is exported from the geological 3D model (main output T1.1).



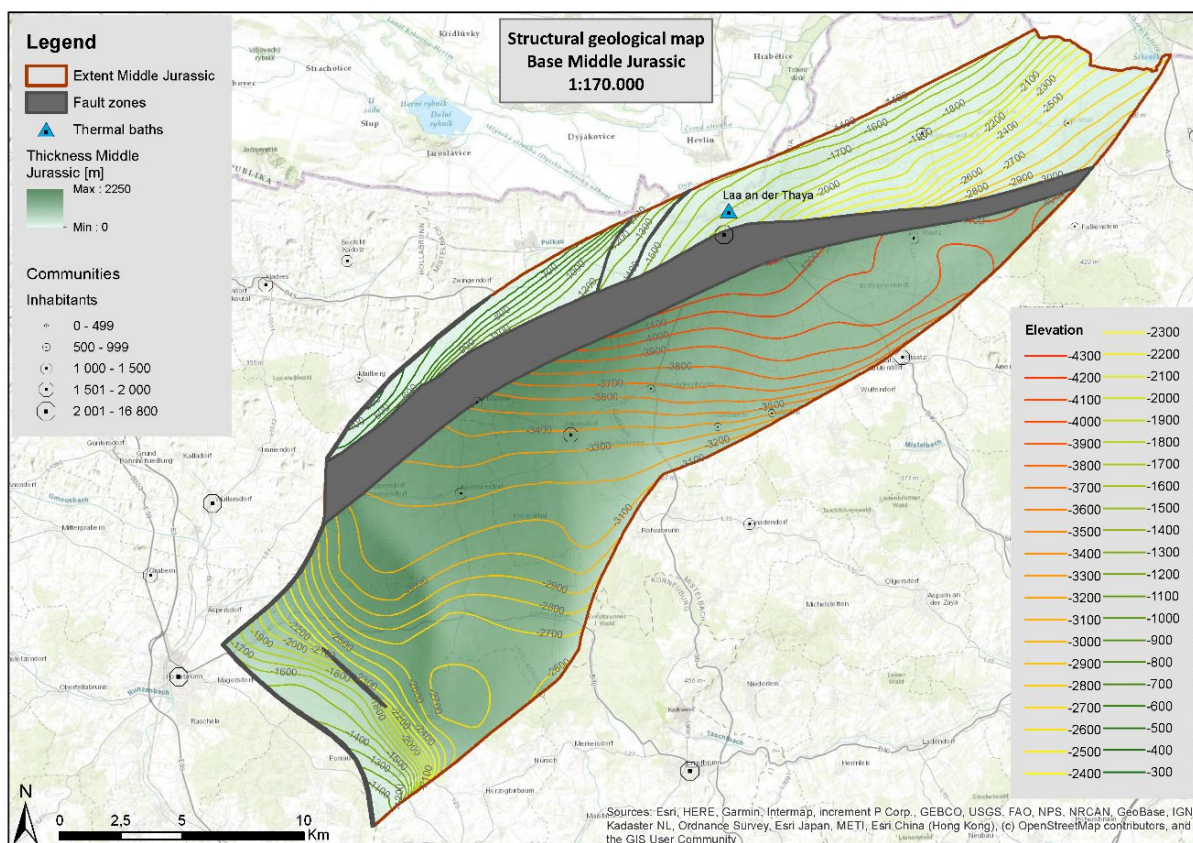


Map of the thickness and structure of the base Egerian Sandstones in Austria in the scale of 1:160.000. Structural data is exported from the geological 3D model (main output T1.1).



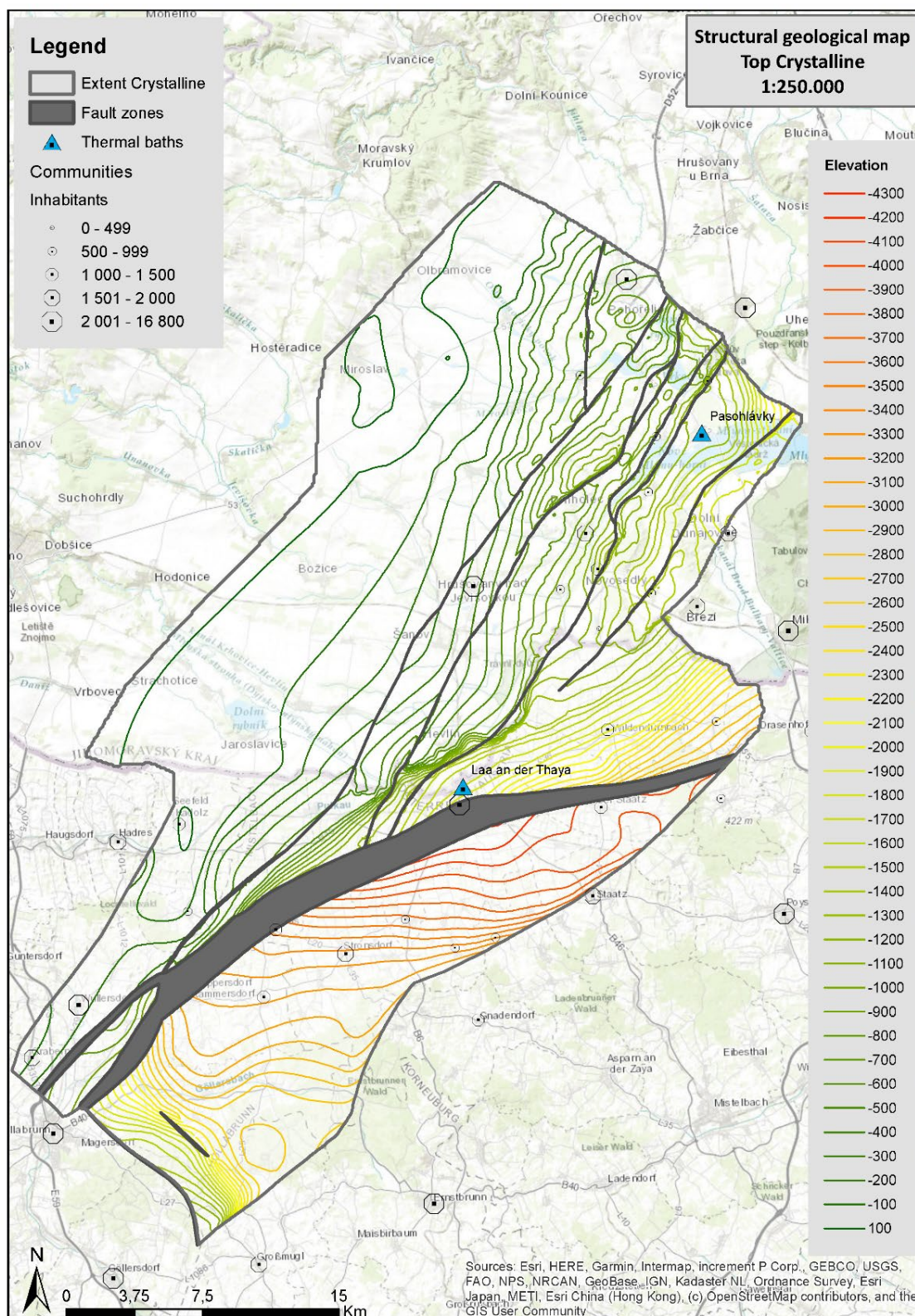


Map of the thickness and structure of the base Kurdejev Formation in the Czech Republic in the scale of 1:60.000. Structural data is exported from the geological 3D model (main output T1.1).



Map of the thickness and structure of the base of Middle Jurassic deposits in Austria in the scale of 1:170.000. Structural data is exported from the geological 3D model (main output T1.1).





Map of the thickness and structure of the base of top Crystalline Basement in the scale of 1:250.000. Structural data is exported from the geological 3D model (main output T1.1).